



### AML21CBA2AD



**AML21 Series, Electronic Control Pushbutton, Square, Standard Bezel, Lighted, 1 Incandescent Lamp, DPDT, Alternate Action, Snap in panel mount**

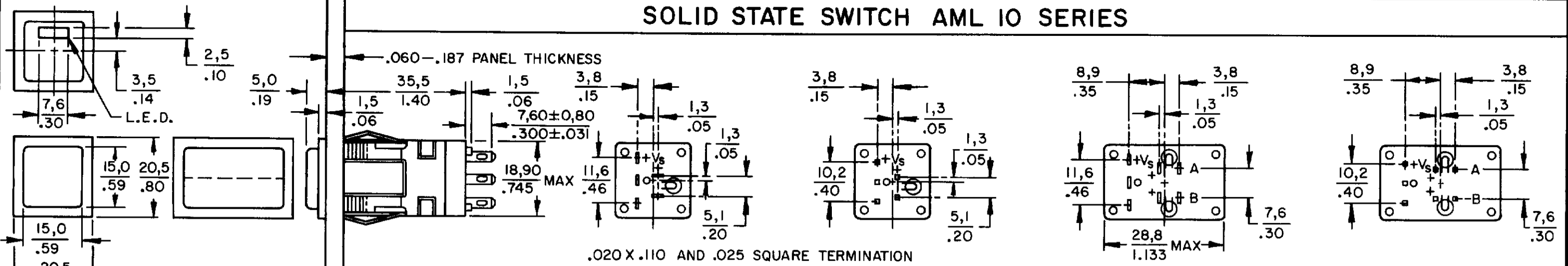
#### Features

- 1, 2, or 4 poles.
- Silver or gold contacts.
- Full guard bezel option.
- Momentary or 2-level alternate action (push-on, push-off).
- UL recognized, CSA certified.
- Lamps can be furnished installed or ordered separately.
- Lamp circuit independent of switch circuit.

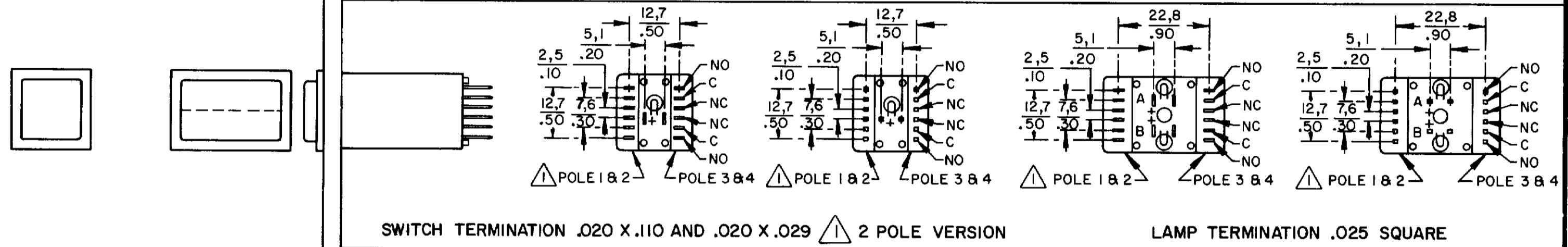
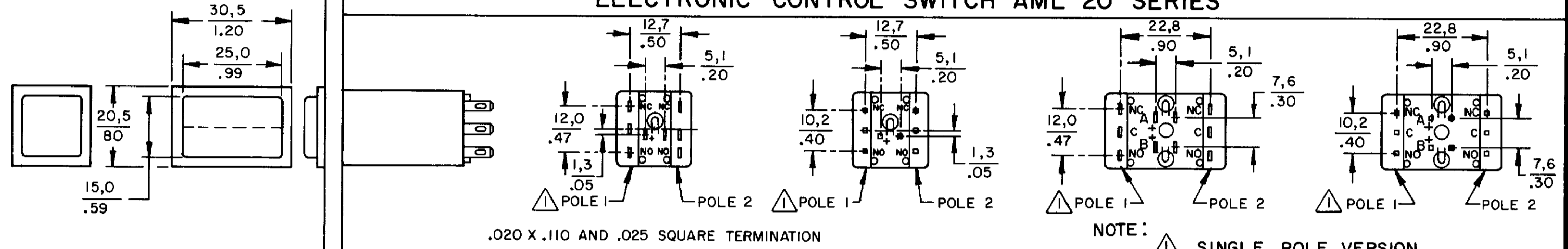
Product Specifications	
Product Type	MICRO SWITCH™ Pushbutton
Housing Type	Square
Circuitry	DPDT
Action	Alternate action
Mounting	Snap-in Panel
Lamp Type	Lighted, 1 Incandescent Lamp
Termination	.110 x .020 (Solder or Quick-Connect)
Ampere/Voltage Range (Resistive Load)	0.4-2 A @ 0.5 -250 Vac, 0.4-2 A @ 0.5-30 Vdc, 0.4-3 A @ 0.5-125 Vac
LED/Lamp/Neon Voltage	No Lamp Installed
Comment	use AML51 button
Availability	Global
UNSPSC Code	30211913
UNSPSC Commodity	30211913 Push button switches
Series Name	AML21

# AML PUSHBUTTON AND INDICATOR SERIES

## SOLID STATE SWITCH AML 10 SERIES

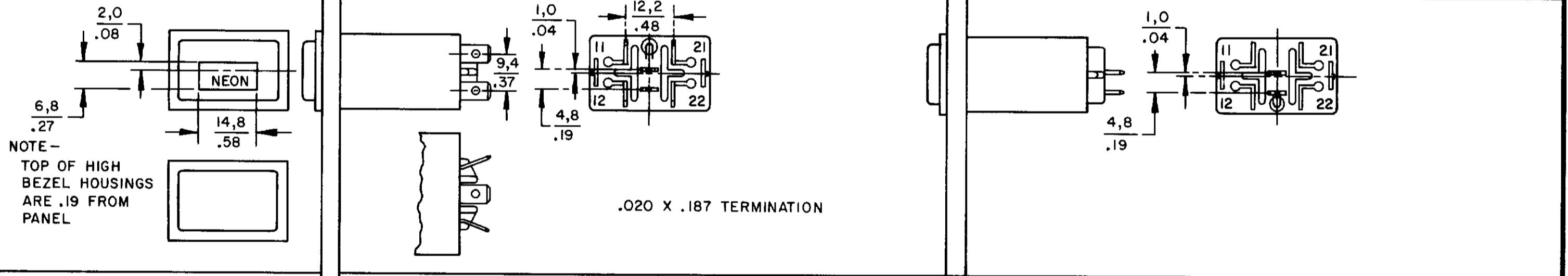


## ELECTRONIC CONTROL SWITCH AML 20 SERIES

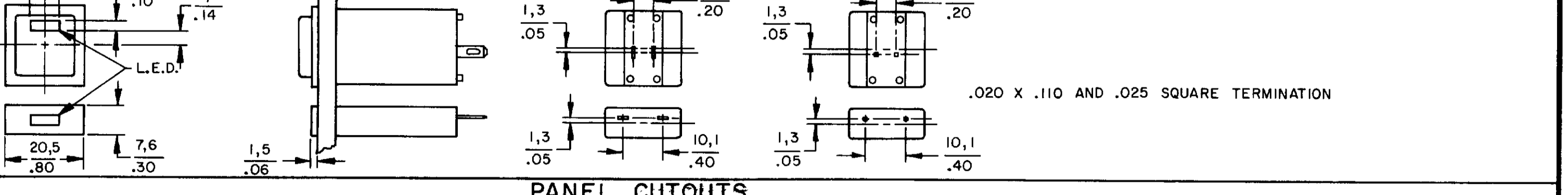
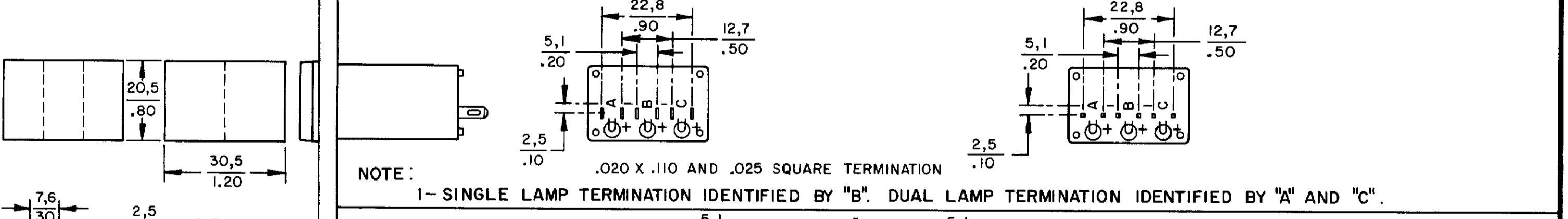
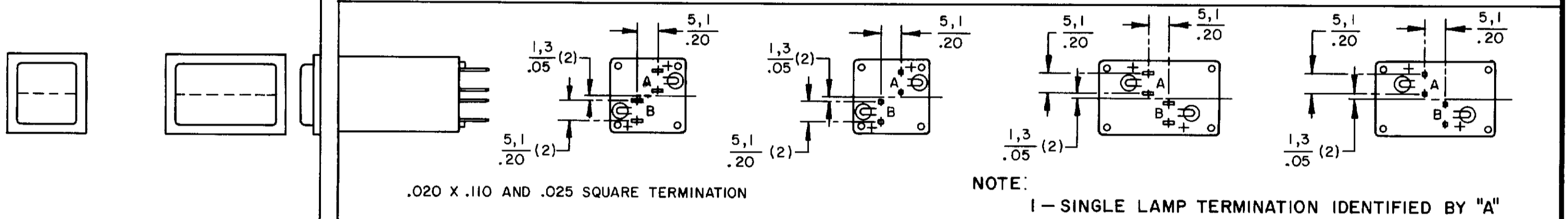


## POWER SWITCH AML 30 SERIES

## LINE POWER IND AML 43 SERIES



## INDICATORS AML 40 SERIES

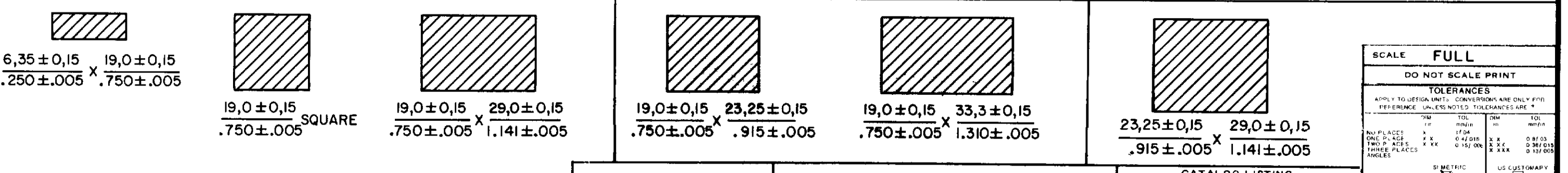


## PANEL CUTOUTS

### WITHOUT BARRIERS

### SHORT BARRIER

### LONG BARRIER



SCALE FULL	
DO NOT SCALE PRINT	
TOLERANCES	
APPLY TO DESIGN UNITS. CONVERSIONS ARE ONLY FOR REFERENCE. UNLESS NOTED, TOLERANCES ARE:	
FRAMES	± .005
NO PLACES	± .005
ONE PLACE	± .005
TWO PLACES	± .005
THREE PLACES	± .005
ANGLES	± .005
DESIGN UNITS	DI METRIC <input type="checkbox"/> US CUSTOMARY <input type="checkbox"/>
THIRD ANGLE PROJECTION	
WEIGHT	

CATALOG LISTING  
AML 10 20 30 40  
PAGE 1 OF 1 SERIES CHART 1  
RELEASE NO. CO-78498 REPLACES & 40 SERIES

ISSUE 6  
CHECK JAF 11 JUL 94

REVISIONS  
A 209297  
B 201477  
C 201566  
D 201696  
E 202971  
30 APR 01

RASTER  
DRAWN JAK  
17 JUN 94